

# Jurongville Secondary School

## The JVS PLD Initiative

### Parent Briefing 2024

*Learn More Actively,  
Think More Critically and Creatively,  
Experience More Joy & Success.*



# **Overview :The National Digital Literacy Programme and the PLD Initiative**

# Intended Outcomes of the PLD Initiative

1. The NDLP was launched in March 2020 to help students **strengthen their digital literacy and acquire digital skills** needed to navigate an increasingly digitalised world.
2. Under the NDLP, every secondary school student will **own a school-prescribed personal learning device (PLD)**. Students may use funds from their Edusave Account to pay for the PLD.

The use of the PLD for teaching and learning aims to:



Support the Development of Digital Literacy



Support Self-Directed and Collaborative Learning



Enhance Teaching and Learning

# How will your child/ward use the PLD?

## In Jurongville Secondary School, your child will...

- have the opportunities to experience specific computer aided drawing tools and ICT software to enhance the qualities of their work.
- use e-Book to support learning (Hands-on active learning)
- review past lessons and access digital resources curated by the teachers on the Singapore Student Learning Space (SLS) and Google Classrooms
- visit exhibitions in virtual museums in SG



SINGAPORE  
STUDENT  
LEARNING  
SPACE



# How will your child use the Personal Learning Devices?

## In Jurongville Secondary School, your child will...

- learn curriculum subjects independently or collaboratively through online tools like Google Classroom and Google Suite.
- connect to the real world by keeping abreast with news and current affairs
- hone oracy skills through presentations, recitals, video-making and recording their views or speeches;



**padlet**



Google Classroom

# Cyber Wellness Concerns Identified by International Studies



## Harmful Online Content

50% of Singaporean teenagers are exposed to cyber threats and 28% of them are exposed to violent content.

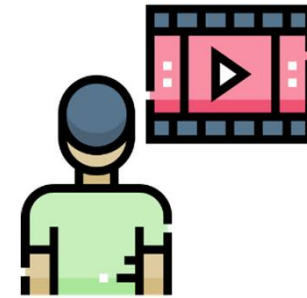
*(COSI, 2020)*



## Distraction from Learning

72% of teens feel compelled to immediately respond to texts, social posts and notifications.

*(Kimball & Cohen, 2019)*



## Excessive Screen Time

Teens who don't sleep enough report higher levels of depressive symptoms than well-rested peers (31% vs. 12%).

*(Kimball & Cohen, 2019)*

# Supporting Students in the Safe and Effective Use of the Devices

The school has measures in place to enable a safer digital environment for learning with the use of PLDs, e.g.

- School rules on digital device use
- Classroom management and routines
- Cyber Wellness Education in CCE
- Partnering parents/guardians to support students in their use of technology for learning
- Device Management Application (DMA) to support a safer digital environment for learning

# Classroom Management and Routines

## Safer digital environment for learning

1. Device will be brought to school every day. Classroom lockers available to reduce the weight of school bags.
2. Teachers will require use of device for lessons, but not for all lessons.
3. Students will be able to access notes / teachers' teaching materials learning materials in the Student Learning Space or Google Classroom.
4. Students can submit some assignments digitally to their teachers.
5. Students can use their device in school after lesson hours.



# Cyber Wellness Education

Safer digital environment for learning

## A. Educating students on Cyber Wellness

MOE has made significant changes to the Character and Citizenship Education (CCE). Cyber Wellness will feature significantly in the CCE2021 lessons.

Topics covered in the Cyber Wellness lessons include:

- Cyber Use
- Cyber Identity
- Cyber Relationships
- Cyber Citizenship
- Cyber Ethics



# Cyber Wellness Education in CCE

Throughout their Secondary School education, students will learn about:

- Balanced use and self control
- Cyber bullying and Upstanding
- How to be a positive influence online
- How to handle online falsehoods
- How to manage social media (peer influence, emotions, echo chambers)
- Online relationship and Online safety (grooming, self disclosure)
- To respect intellectual property rights


# Parents' / Guardians' Role

## Safer digital environment for learning

- We would like to partner parents/guardians to ensure that students are well supported in their use of technology for learning.
- As parents/guardians, you can help in the following ways:
  - Model good digital habits for your child/ward e.g. parents/guardians not using devices during family meals.
  - Know your child/ward well, and have conversations with your child/ward about safe and responsible use of technology.
  - Set ground rules for internet/device usage.
  - Guide your child/ward to use productivity tools using his/her PLD, to organise information and simplify tasks for efficiency.



# Device Management Application Installation

- Your child's/ward's PLD will be installed with a Device Management Application (DMA) to provide a safer digital environment for learning.  mobile guardian  
Designed for Schools. Loved by Parents.
- Installation of the DMA will be performed after the collection of the device. Students will be guided on the installation.
- This applies to both devices purchased through the school and pre-existing student-owned devices.
- The DMA will be **funded by MOE** and will be **uninstalled** from the device **when your child/ward graduates/leaves the school.**

# In-School DMA Settings (Default)



Schools will determine DMA settings for **in-school use**. As a default, these settings will continue to be in place after school as well:

- MOE and the school will set the level of web content filtering, including filtering out objectionable content or content that may not be conducive to teaching and learning (e.g. social media, pornography, gambling, or websites containing extremist content)
- Students will be able to use the device from **06.00am to 10.00.pm** daily
- The school will determine the apps and programs to be installed to support teaching and learning

# Providing Parents/Guardians with Greater Choice for After-School PLD Use

*The school will provide parents/guardians with more information on exercising the options.*

Default	Option A	Option B
<p><b>In-school DMA settings will continue after school hours</b></p>	<p><b>Parents/Guardians can modify the DMA settings after school hours</b></p>	<p><b>Parents/Guardians can choose to disable DMA after school hours</b></p>
<p>For parents/guardians who want their child's/ward's use of the device to be restricted only to teaching and learning, and prefer to leave it to the school to decide on DMA settings after school hours.</p>	<p>For parents/guardians who want more leeway over the use of the device, and prefer to take charge of the level of restrictions for their child's/ward's use of the device after school hours.</p>	<p>For parents/guardians who do not want their child's/ward's use of the device to be regulated by DMA after school.</p>

- Having default school settings continue after school hours is the best option for parents/guardians who prefer not to, or do not feel ready to manage their child's/ward's device use on their own.
- Parents/guardians can request to change their choice of DMA settings at any time.

## Providing Parents/Guardians with Greater Choice for After-School PLD Use

	Default	Option A	Option B
<b>Protecting students from objectionable content</b>	MOE/school sets level of web content filtering	Parents/Guardians can apply additional content filtering	No content filtering
<b>Reduce distractions from learning through control of applications</b>	Parents/Guardians and students are <b>unable</b> to install additional applications	Parents/Guardians and/or students can install additional applications after school hours, but these applications are disabled during school hours	
<b>Limit screen time</b>	School sets hours during which students are able to use the device online	Parents/Guardians can modify the amount of screen time*	No control over screen time

\*Screen time limits set by the school will override parents'/guardians' settings during school hours.

## Providing Parents/Guardians with Greater Choice for After-School PLD Use

	Default	Option A	Option B
<b>Parent/guardian account</b>	Provided to allow monitoring of PLD activities after school hours		Not provided
<b>Monitor students' cyber activities</b>	Parents/Guardians can track their child's/ward's browser history after school hours		<p>Parents/Guardians will <b>not</b> be able to monitor or control their child's/ward's use of the device through the DMA after school hours</p> <p>No data* will be collected during use of PLD after school hours</p>



# Deciding on the Choice of After-School DMA Option

Parents/guardians may wish to consider the following questions before deciding on the choice of after-school DMA option which is best for your child's/ward's learning.

## 1. Child's/ward's current device usage habits

- How much time does my child/ward spend on their device?
- How well is my child/ward able to regulate their device usage on their own?
- Does my child/ward get easily distracted while doing online learning?

## 2. Parents'/Guardians' involvement

- How confident and familiar am I with managing my child's/ward's cyber wellness?
- Are there existing routines and open conversations on the use of the Internet at home?
- Am I aware of how to prevent different types of cyber threats that my child/ward might face?



***Have a conversation with your child/ward to talk about which setting is best for your child's/ward's learning.***

# Data Collected by the DMA

The DMA does **NOT** collect any of the following data:

- Login IDs and passwords entered into websites or into any applications
- Actions performed (e.g. posts, online comments, items added to a shopping cart, etc.) when visiting websites and using apps
- Documents and photos stored in the PLDs
- PLD location
- Webcam videos and microphone recordings

# Data Collected and Access Rights

- All user data collected through the DMA will be stored in secure servers managed by appointed DMA Vendors with stringent access controls and audit trails implemented. The DMA solutions used are cloud-based Software-as-a-Service (SaaS) solutions and are trusted solutions that have been operating for many years. They have also been subject to regular security review and assessment by independent reviewers.
- DMA solutions have sufficient security robustness to ensure data collected are properly stored and protected. MOE will also subject the DMA Vendors to regular audit on the security of the system based on tender requirements.

# Data Collected and Access Rights

- To prevent unauthorised access, DMA Administrators and DMA Vendors will be required to access their accounts using 2-factor authentication or the equivalent to ensure proper accountability for information access and other activities performed. There will be regular account reviews and audits for DMA Administrators' and DMA Vendors' accounts.

# Additional Resources for Parents

To support you in keeping your child/ward safe online, you may refer to these additional resources:

- Parent Handbooks (I) and (II) on Learning with a Personal Learning Device (shared by the school)
- Parent Kit on Cyber Wellness for Your Child (<https://go.gov.sg/moe-cyber-wellness>)
- Parent Kit on Raising a Digitally Smart Child (<https://go.gov.sg/moe-raising-a-digitally-smart-child>)
- Parenting with MOE: Instagram Live session on Raising Digitally Smart Kids (<https://go.gov.sg/iglive-raising-digitally-smart-kids>)
- Schoolbag article 'Keeping our teens safe online' (<https://www.schoolbag.edu.sg/story/keeping-our-teens-safe-online>)
- MOE Cyber Wellness Programme (<https://www.moe.gov.sg/education-in-sg/our-programmes/cyber-wellness>)
- Media Literacy Council's Resources for Parents (<https://go.gov.sg/better-internet-sg>)
- National Library's Learning & Information Literacy Resources (<https://sure.nlb.gov.sg/>)
- TOUCH Community Services (<https://help123.sg>)

# Device and Funding Information

# Jurongville Secondary School PLD

## *Enhanced Lenovo 500e Gen 4*



The school will be using the **Lenovo 500e Gen 4 (Enhanced)** (Upgraded RAM) for teaching and learning.

Total cost with GST: \* **\$587.50**

- Intel N100
- 8GB RAM, 64GB
- 12.2" Multi-Touch Screen 1920x 1200
- Intel WIFI 6 & Bluetooth 5.1
- Built in 720p HD Webcam + 5MP camera
- Optical Mouse & Stylus
- Carrying Case
- **3 Year Carry in Warranty & Insurance**

# Insurance Coverage



The package includes a 3-year warranty, and 3-year insurance\* which includes:

Insurance Coverage	Claimable
<ul style="list-style-type: none"><li>• Fire</li><li>• Lightning</li><li>• Power Surges</li><li>• Accidental e.g water spillage, drop etc.</li><li>• Theft due to forcible entry</li><li>• Robbery</li></ul> <p>* Accidental loss will not be covered by insurance.</p>	<p>*2 repairs or 1 replacement (3-year insurance)</p>



# Jurongville Secondary School PLD



***Enhanced Lenovo 500e Gen 4***

The school chose the device because of:

- Portability (1.32kg)
- Durability (MIL-810G certified, Spill-Resistant Keyboard (30ml))
- Long Battery Life
- Dual Usage (Laptop/Tablet)
- Features that support teaching and learning well (HDMI port)
- Cost Effectiveness
- Eco-system friendly
- Touchscreen with Stylus
- Dual Camera

# Technical Support for Students' Devices

Technical support will be provided to students through:

## 1. **PLD@Library Centre**

- 2.30 to 3.30 pm (During School Term)
- Troubleshooting of device issues
- Solve connectivity issues
- Collection of devices to be sent for repairs

## 2. **Lenovo Service Centre @ Tai Seng Centre, SmartCares Solutions**

3 Irving Road, #01-17 Singapore 369522 (Beside Tai Seng MRT station, Exit A)  
#03-19/20 Singapore 179097

Working Hours :Monday – Friday 11:00am – 7:00pm (closed on Sunday and Public Holidays)

Tel: 68714838 Email: [lenovo@smartcares.com](mailto:lenovo@smartcares.com)

Pre-Registration (For Faster Service/Drop-off): <https://smartcares.com/lenovo>

# Funding Support for Singapore Citizen (SC) Students

- **The cost of the device bundle can be paid using your child's/ward's Edusave account**, after setting aside provision for payment of second-tier miscellaneous fees.
- To ensure the affordability of devices, MOE has provided Edusave top-ups of \$200 in 2020 to 2022, and \$300 in 2023, to all eligible Singaporean students in primary and secondary schools.
- This is on top of the annual \$290 credited into the Edusave account for Secondary School students and \$230 for Primary School students.

# Funding Support for Singapore Citizen (SC) Students

## Student A (SC)

Lenovo 500e Gen 4



- For SC students who are on MOE Financial Assistance Scheme or whose family's monthly income meets the following criteria:

**Gross Household Income (GHI) ≤ \$3,000, or**

**Per Capita Income (PCI) ≤ \$750**

the school will subsidise 50% of device bundle cost or \$350, whichever is lower.

- The remaining amount will be payable from the students' Edusave account. If there is insufficient balance in the students' Edusave account for the remaining amount, school will provide additional subsidy so that the cash out-of-pocket (OOP) is \$0.

<b>Student A (SC on MOE FAS)</b> GHI ≤ \$3,000 or PCI ≤ \$750	
Device Bundle Cost	<b>\$587.50</b>
Student Subsidy(50%)	<b>\$293.80 (correct to nearest 10 cent)</b>
Available Edusave Balance <i>(After setting aside for 2<sup>nd</sup>-tier misc. fees)</i>	>\$293.70 before deduction \$293.70 will be deducted
Additional Subsidy	<b>School will subsidise if insufficient Edusave</b>
Cash Out-of-pocket	<b>\$0.00</b>

For more details on financial assistance, please approach the school.  
Each student would receive a personalised bill subsequently.

# Funding Support for Singapore Citizen (SC) Students Student B (SC)

- For SC students whose family's monthly income is:

**\$3,000 < Gross Household Income (GHI) ≤ \$4,400, or**

**\$750 < Per Capita Income (PCI) ≤ \$1,100**

the school will subsidise 30% of device bundle cost or \$200, whichever is lower.

- The remaining amount will be payable from the students' Edusave account. If there is insufficient balance in the students' Edusave account for the remaining amount, school will provide additional subsidy so that the cash out-of-pocket (OOP) is not more than \$50.

Lenovo 500e Gen 4



Student B (Non MOE-FAS SC from lower income family) \$3,000 < GHI ≤ \$4,400 or \$750 < PCI ≤ \$1,100	
Device Bundle Cost	<b>\$587.50</b>
Student Subsidy (30%)	<b>\$176.30 (rounded to the nearest 10 cents)</b>
Available Edusave Balance <i>(After setting aside for 2<sup>nd</sup>-tier misc. fees)</i>	>\$411.20 before deduction \$411.20 will be deducted
Additional Subsidy	<b>School will subsidise up to \$361.20 if insufficient Edusave</b>
Cash Out-of-pocket	<b>Up to \$50.00</b>

For more details on financial assistance, please approach the school.  
Each student would receive a personalised bill subsequently.

# Funding Support for Singapore Citizen (SC) Students

## Student C (SC)

SC students whose family's monthly

**Gross Household Income (GHI) > \$4,400 or monthly Per Capita Income (PCI) > \$1,100,**

no subsidy will be provided. Parents/Guardians can use their child's/ward's Edusave or cash to defray the device bundle cost.



Lenovo 500e Gen 4

Student C (Not Eligible for Subsidy) GHI > \$4,400 or PCI > \$1,100	
Device Bundle Cost	<b>\$587.50</b>
Available Edusave Balance <i>(After setting aside for 2<sup>nd</sup>-tier misc. fees)</i>	> <b>\$587.50</b> before deduction <b>\$587.50</b> will be deducted
Cash Out-of-pocket	<b>If insufficient edusave</b>

For more details on financial assistance, please approach the school.  
Each student would receive a personalised bill subsequently.

**What's Next?**

# For Singapore Citizens (SC) Students



**Parents with Singpass** can access the **Parental Consent for the Purchase of Personal Learning Device (PLD)** via the following link:

<For Government and Government-aided Schools, use>  
<https://go.gov.sg/pdlpadmin> \*

Time Frame	Activity
Fri 5 Jan Online through Form SG (Parent Gateway)	Submit <b>Parental Consent for the Purchase of Personal Learning Device (PLD)</b> via the FormSG link on the previous slide.  Parents without access to Singpass can submit their consent via hardcopy, which includes the following: <ul style="list-style-type: none"><li>• Intent to Purchase Personal Learning Device (PLD);</li><li>• Standing Order for Use of Edusave Account; and</li><li>• Authorisation Form.</li></ul> May also obtain hardcopy from CM if needed
March 2023	Collection of devices by students



# For Permanent Residents / International Students

Time Frame	Activity
Fri 5 Jan 2024	Submit <b>Parental Consent for the Purchase of Personal Learning Device (PLD)</b> which includes the following: <ul style="list-style-type: none"><li>• Intent to Purchase Personal Learning Device (PLD);</li><li>• Authorisation Letter</li></ul> May also obtain hardcopy from CM if needed
<b>Feb</b>	Parent/Guardian to make payment via Giro/PayNow/Cheque/etc.
March 2024	Collection of devices by students

# Collection of Devices

Your child/ward will be collecting his/her device in school at the end of **Term 1 2024**.

If you would like to verify the condition of the device during collection with your child/ward:

- You may arrange to collect the device **at the contractor's service / collection centre\*** or appoint an adult proxy to do so.
- Your child/ward would need to bring the device to school and arrange for the school's IT department to install the DMA.

Please approach the school for further advice or clarification if you would like to make this arrangement.

\* Parents/Guardians (or adult proxy) will **not** be able to collect the PLD from the school.

# Important Contacts / Helplines

To access / find out more about...	Contact / Helpline
This deck of slides	<a href="https://jurongvillesec.moe.edu.sg/">https://jurongvillesec.moe.edu.sg/</a>
Edusave balance	6260 0777
Financial assistance	65638704
Jurongville	Jurongville@moe.edu.sg